



# Turntable ladders

Operational quality at the highest level

Because safety comes first.

 **rosenbauer**

# Technology increases



# human potential.

Our concept finds its basis in intuition,  
tempo and reliability.



# Committed to technological leadership.

---

A tradition of innovation and professionalism

Many thousands of lives have been saved over the last decades with Rosenbauer turntable ladders.



For more than 150 years, the name Rosenbauer has been synonymous with significant innovations and ground-breaking technology in the manufacture of firefighting vehicles and extinguishing systems. Today, Rosenbauer is the global market leader in preventative and defensive fire protection and disaster control. The company offers firefighters a full range of municipal extinguishing vehicles, turntable ladders, hydraulic platforms, airport, industrial, and speciality vehicles, extinguishing systems, firefighting equipment, stationary extinguishing systems, and solutions for vehicle and operations management in the area of telematics.

Many Rosenbauer team members are themselves experienced firefighters. Which is why they know exactly what's important in an operation. This knowledge flows into the development work and is the basis for new pioneering techniques and solutions – from professionals for professionals.

Even new developments and advancements for Rosenbauer turntable ladders and hydraulic platforms have a direct basis within our practical experience. We react directly to, for example, specific changes in operational conditions. The benefits for the fire brigade and its crew members are always in focus - one of the reasons why firefighters the world over place their trust in Rosenbauer.

#### **Rosenbauer turntable ladders mean**

- **Safety and reliability**
- **Best quality**
- **Robustness**
- **Sophisticated functionality**
- **Innovation and cutting-edge technology**
- **Intuitive operation**
- **Attractive design**

#### **A promise for the future.**

Rosenbauer is the only full-range supplier for fire protection and firefighting worldwide. But for our committed team, this is no reason to rest easy. Innovative power and expert knowledge have made Rosenbauer the technological leader in the industry. We are committed to remaining at the cutting edge of development to implement the best possible solutions in the future. Our competence as a technology leader and our motivation as a pioneer ensure the highest possible levels of safety and quality. Both today and in the future.

#### **Metz Technology: Implemented by Rosenbauer**

Rosenbauer turntable ladders include technology from Metz, a specialist in the field of aerial rescue. As an integral part of Rosenbauer, Metz is growing into a respected technology brand and a symbol of quality in aerial rescue.

# Innovative



# overall concept.

As we continue to develop  
our products, quality follows  
the requirements.







# From compact to sky-high

## Extensive range of turntable ladders.

Narrow streets, parked cars, city greenery; the locations for turntable ladders can vary widely. And the requirements for payload and functionality are just as varied as the conditions. The Rosenbauer engineers attach great importance to the flexible installation and compact working radius of their vehicles. This also gives emergency crews access where conditions have previously made it impossible.

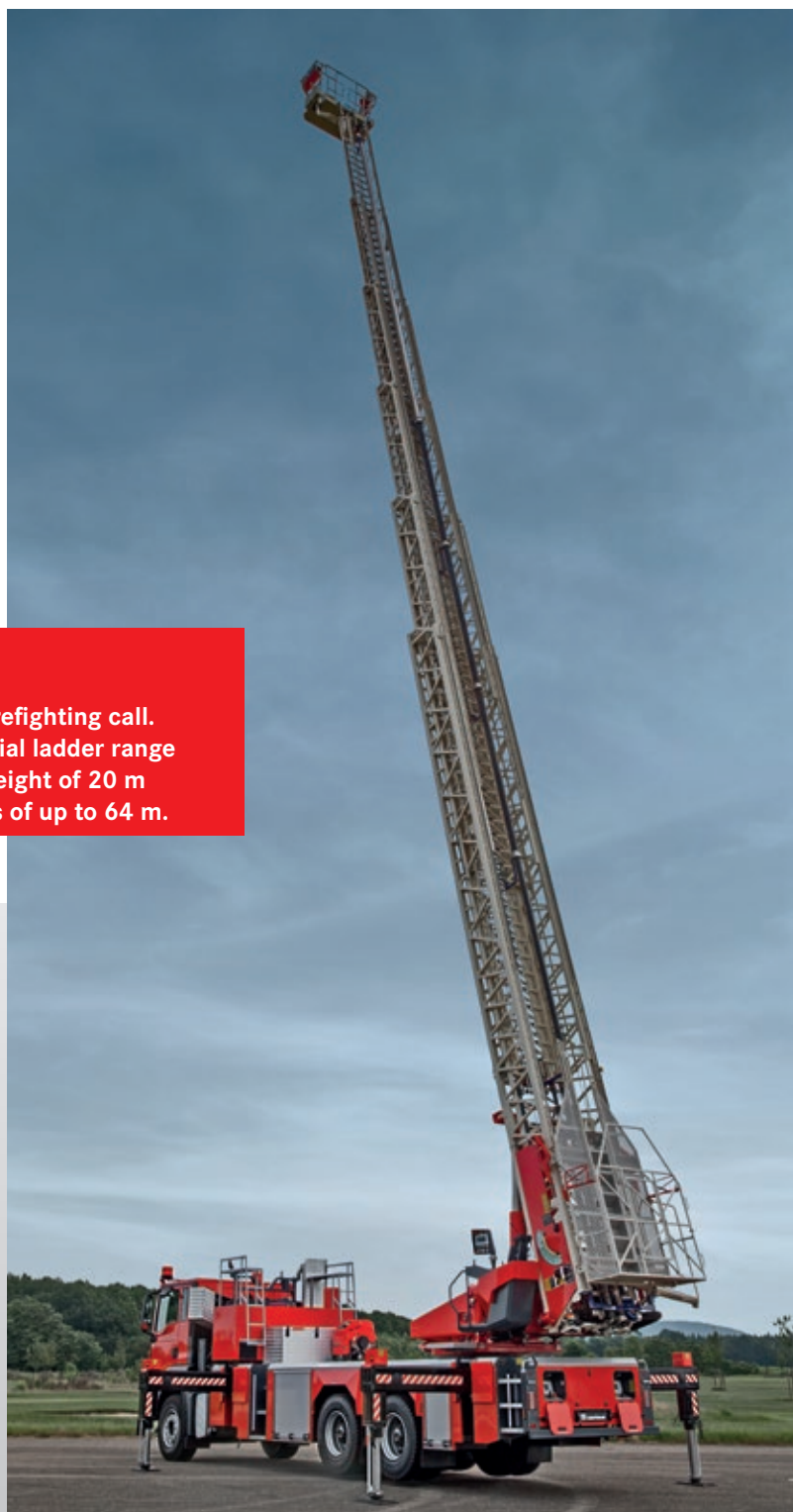
**The right product for every firefighting call. The Rosenbauer aerial ladder range starts at a rescue height of 20 m and reaches heights of up to 64 m.**

### Innovative turntable ladder range

Rosenbauer offers the right product for every firefighting applicational scenario with the sophisticated modular construction system from Metz Technology. The Rosenbauer aerial ladder range starts at a rescue height of 20 m and reaches a height of up to 64 m. A good footing for successful rescue operations of all kinds.

### Product quality at the highest level

The Rosenbauer quality promise is far-reaching. Thanks to its high level of expertise, technological leadership and many years of experience, Rosenbauer is able to bring the best product to the market in every variant.



*Rosenbauer L64. Maximum height and maximum rescue rate using a 3-person lift.*

# Many



## Height classes

| Turntable ladder                        | L20     | L27     | L32     | L32A-XS |
|---|---------|---------|---------|---------|
| Working height                          | 21.8    | 27.8 m  | 33.2 m  | 32.0 m  |
| Maximum cage load                       | 500 kg  | 500 kg  | 500 kg  | 500 kg  |
| Set-up time in accordance with EN 14043 | 58 sec. | 65 sec. | 70 sec. | 70 sec. |
| Jacking width                           | 4.65 m  | 4.65 m  | 4.8 m   | 4.8 m   |
| FA version                              | Yes     | Yes     | Yes     | Yes     |
| Lift (optional)                         | -       | -       | -       | -       |
| Performance pivot mounting              | -       | Yes     | Yes     | Yes     |
| Compact pivot mounting                  | Yes     | Yes     | Yes     | Yes     |

# classes of its own.

## The Rosenbauer turntable ladder range.

Behind the height classes of the Rosenbauer turntable ladders is a well thought-out concept that is 100 % oriented to the requirements and advantages of fire services worldwide. Working height, basket load and many other characteristics of each individual class are aimed at providing emergency crews with the best possible support in their work rescuing and protecting people and assets.

| L39     | L42A-XS | L44     | L56      | L64      |
|---------|---------|---------|----------|----------|
| 40.3 m  | 42.0 m  | 43.7 m  | 56.2 m   | 63.6 m   |
| 450 kg  | 400 kg  | 450 kg  | 450 kg   | 300 kg   |
| 80 sec. | 85 sec. | 88 sec. | 120 sec. | 127 sec. |
| 4.8 m   | 4.8 m   | 4.8 m   | 5.7 m    | 5.7 m    |
| Yes     | Yes     | Yes     | Yes      | Yes      |
| Yes     | -       | Yes     | Yes      | Yes      |
| Yes     | Yes     | Yes     | Yes      | Yes      |
| -       | -       | -       | -        | -        |

# Rosenbauer multifunctional vehicles

Perfectly equipped for every need.

## The "everything from a single source" principle

Rosenbauer develops and builds custom multifunctional vehicles upon request. As the only full-range supplier worldwide, Rosenbauer has immediate access to all major components and is ideally placed to integrate them into a cohesive whole.

Chassis, superstructure, and extinguishing technologies come together in one integrated concept. Flawless implementation is assured through standardized processes, mature workflows in production, and an experienced production team. This approach has proven successful in adapting individual vehicles to customer requirements and special operational scenarios. Take the popular aerial ladder: it is available with just a small booster water pump and minimal equipment or can also be fully equipped to serve as a first attack vehicle.

In addition to its wide-ranging adaptability, the outstanding longevity speaks in favor of the Rosenbauer turntable ladder. Customers benefit from the highest quality, guaranteed reliability and the greatest possible future-safe investment.



*Rosenbauer L64 aerial ladder with normal/high pressure pump, foam proportioning and water/foam tank*



*Booster pumps can be installed on any turntable ladder and guarantee a secure supply of water right up to the top of the ladder.*



*Rosenbauer turntable ladders can be optionally equipped with a large turret directly at the top of the ladder for even greater flow rates.*



# Rosenbauer first attack vehicles

Special skill: Extinguish and rescue at the same time.



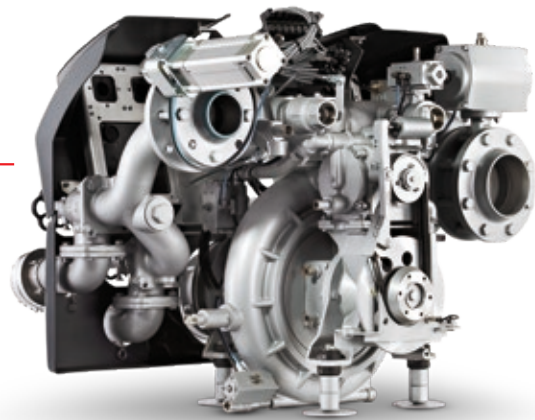
## Flexible overall concept

Depending on the overall concept, Rosenbauer turntable ladders can be flexibly adapted to all brigade, squadron and group cabins.

*Rosenbauer first attack turntable ladders are custom built and are tailor made to meet the customer's requirements.*

The "First Attack" versions of the Rosenbauer turntable ladders ensure optimal rescue, extinguishing and emergency deployments. Ready for just about anything, these vehicles can be individually equipped with extra pumps, tanks, crew cabs, rapid intervention hose reels, and a variety of technical options, including hydraulic rescue tools.

All first attack components are fabricated from a single source and guaranteed to be of the highest quality and reliability.



### Perfectly matched firefighting equipment

Rosenbauer offers a wide selection of extremely efficient extinguishing systems. The "everything from a single source" principle also applies to the entire extinguishing technology - from the development, through the production, all the way to the integration into the vehicle structure. The extinguishing technology is perfectly matched to the other components and thus guarantees safety and reliability in use. Its functional design and intuitive operation also ensure comfort without compromising safety. Rosenbauer firefighting equipment also fulfills all the specific requirements of industry, municipalities and airports with its various capacities.



*The Rosenbauer NH 45 installed in the rear guarantees optimal utilization of the available space.*



*Upon request, Rosenbauer turntable ladders can also be equipped with a CAFS system.*

### Sophisticated built-in pumps

With its comprehensive range of pumps, Rosenbauer sets completely new standards. This program offers water discharge rates of 1,000 to 12,000 liters per minute. The innovative rear installation guarantees optimum space utilization - not a millimeter of equipment space is lost. Of course, on request, a lateral or central pump installation is also possible.

### Additional technical equipment.

Like all Rosenbauer vehicles, "First Attack" models are characterized by a high degree of technical flexibility. A demand-oriented and bespoke upgrade of different elements is possible. In addition, "First Attack" vehicles can also be converted: for example, into a firefighting vehicle with aerial rescue capacities.

More functionality and safety through perfection in every single detail of the equipment.

# We set



# standards.

Trust in the technology leader.

All of these technologies are applied to ensure the highest production quality for custom orders.



# Innovative equipment.

From the rescue cage to the control panel.



## Crucial support in an emergency.

The Rosenbauer turntable ladder is well-equipped, and is perfectly adapted to the requirements of diverse and complex rescue operations. New developments and practical experience continually flow into the ongoing production operation. In cooperation with customers from all parts of the world, the experienced specialists manage to set new technological standards time and again.

Ongoing continual development is the basis of the high standards of the Rosenbauer's turntable ladder system.

- 1 Innovative HR-500 MF rescue cage
- 2 Ladder set in box node design
- 3 Perfectly illuminated body module
- 4 High-tech pivot mounting with stabilizing leveling system
- 5 Innovative operation
- 6 Vertical/horizontal jacking system

# The highly developed rescue cage

Sophisticated down to the smallest detail.

## Innovative: HR-500 MF rescue cage

The HR-500 MF rescue cage has enough room for up to five people, and now - for the first time - it can even accommodate a wheelchair via the turntable ladder. As if that were not enough, we have also improved all other major functions. We went from top to bottom with a fine-toothed comb, adapted each function to the needs of rescue operations, and integrated everything into the aerial ladder system better than ever before.

Another advantage is the lighter, more comfortable design of the cage. The versatile aerial ladder accessories equally impress across a wide variety of tasks in a modern fire brigade.

In the middle of it all.

The rescue cage is the front line for firefighters. Through many years of continuous improvement, Rosenbauer has succeeded in executing a completely new functional concept for the rescue cage.





The wheelchair holder offers a maximum load capacity of 150 kg.

### Wheelchair accommodation for better rescue

The acceptance of a wheelchair is something special for turntable ladders. A special attachment for the cage floor ensures the acceptance, anchoring and safe transport of a wheelchair. When it arrives at the bottom, the wheelchair can be safely pushed out of the cage. The rescue of a person sitting in a wheelchair is complete!

### Four entry points

Depending on the situation, emergency crews can access the cage from any side without hindrance. The ladder set is accessed comfortably and safely via the rear entry point. The cage control stand can be folded away sideways, which results in three entry points on the front side of the cage.

### Space-optimized side protrusion

An intelligently designed lateral bulge ensures a good provision of space. Emergency crews equipped with SCBA units can also be comfortably accommodated in the rescue cage.

### A variety of cage accessories

The Rosenbauer aerial ladder can be relied upon in any situation. Thus, the type of use determines the rescue cage's individual equipment. The range of accessories includes lighting, fully integrated water technology, power supply, a stretcher, and much more. This important and life-saving equipment can be integrated into the middle entry of the folding ladder for assistance, for example, when climbing over balconies or traversing uneven terrain. It also serves as a bridge between the cage and a window if necessary.



Depending on requirements, the stretcher can be turned either to the left or to the right.

### Stable accommodation for stretchers

A stretcher can be mounted on the rail as well as in the center of the cage floor. This increases stability and prevents the cage from tipping sideways. With a live load capacity of up to 300 kg, even the most difficult jobs can be handled safely. The person on the stretcher is within easy reach of both firefighters in the basket, and caregiving – and, if necessary, ventilation – is possible at any time.

### Swiveling control panel

The control panel is located to the left on the inside of the cage. Thus, the firefighter in the cage is always visible from the main control panel. In addition, the center of the basket remains free, which facilitates entry and exit.



The operation of the turntable ladder is possible regardless of the position of the control panel.



All cage attachments are loaded within the vehicle.

# High quality ladder set

**Stability and safety go hand in hand.**

## Proven box nodes design

This patented design distributes forces evenly across the top and bottom belts. This increases torsional stiffness of the entire ladder set.

## Highest processing quality

Each ladder set is fabricated with high-strength, fine-grained steel and powder coating. The hermetically sealed welded joint reliably protects the inside of the ladder set against corrosion. The results: Absolute robustness and long-term dependability!

## Numerous rescue options.

The exceptional stability of the ladder set makes it possible to lift, swivel, and lower loads. Depending on size, the ladders can move up to 4,000 kg at an elevation angle of 60°. Ladders can even be used as a bridge to rescue large numbers of people. Up to 15 persons can descend at once, depending on the ladder type.



*XS ladder set with cut-out for snug fit of the cage boom*



*Maximum stability for maximum horizontal reach*



## Optimum grip and high step-through width

The ladder set is characterized by its high step-through width and optimized grip. Thanks to the large rung gap, the ladder set can be climbed safely even when the rungs are directly over each other.

## Comfort option: active hydraulic vibration damping

Rosenbauer aerial ladders are highly stable and often do not require supplemental damping. This is particularly beneficial if the motor is shut down when rescuing a person from a window, for example. Nevertheless, Rosenbauer does offer active hydraulic vibration damping as an option.

*The wide pass-through width and the large rungs provide safety.*

The ladder set.  
It carries people,  
equipment and  
a great deal of  
responsibility.



### Highly developed rescue lift

The new rescue lift's outstanding characteristics give it a 50 % higher rescue rate. The roomy lift has enough space for up to three people. Ergonomic handles close the gap to the cage, greatly increasing safety when moving from the cage to the lift. Finally, the side egress point on the pivot mounting makes it easy to exit safely from the lift to the ground in any position.

When space permits, lift rails can extend to the ground level for even greater ease during entry and exit.



*Spacious lift with 270 kg live load*

# Well-lit body module.

**Modular design keeps important things in view.**

As many operations occur at night or in poor visibility, lighting solutions are especially important to the emergency crews. Accordingly, the Rosenbauer aerial ladder is fitted with a modern LED lighting concept for the body module as standard. An additional detail: the body module is delivered in a well-equipped high-end version as standard.



**Safe, ergonomic, and robust.**

These factors characterize the aerial ladder's body module and provide the perfect starting point for all tactical decisions during the operation.



### Bright scene lighting

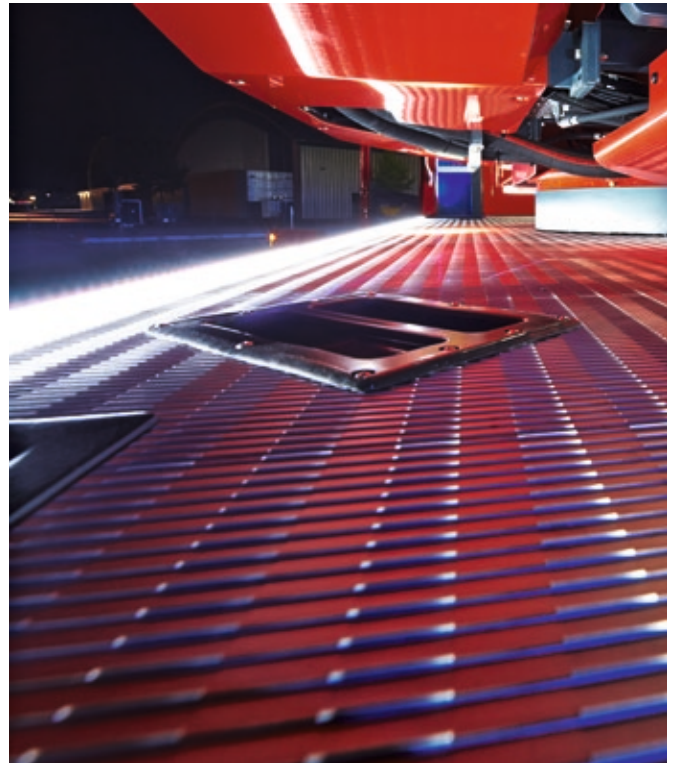
An LED strip runs the complete length of the body and ensures optimum visibility even in bad light. It is securely integrated into the vehicle and completely and evenly illuminates the immediate area without glare.

### Illuminated top surface

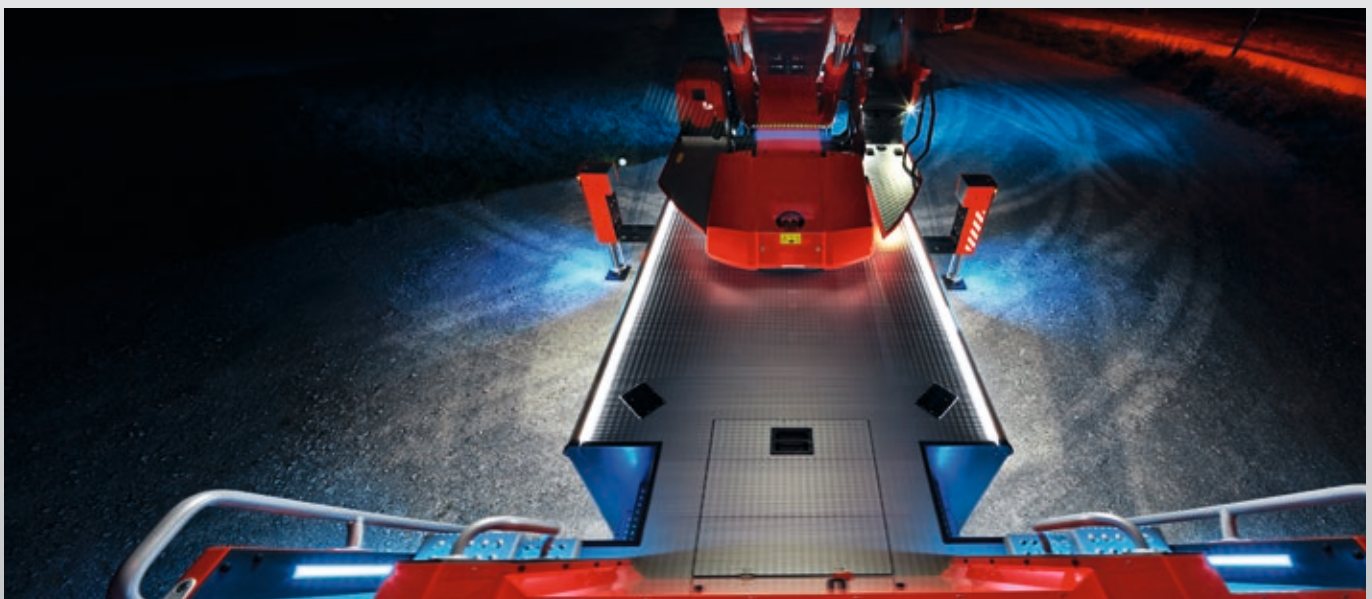
Another securely integrated LED strip around the top surface of the body ensures complete and even illumination. Thanks to these lights, the entire top surface remains fully illuminated at night, during poor weather conditions, and other times of limited visibility.

### Safety-optimized access.

Additional LED strips illuminate the access points, including steps and rails. This makes the steps as safe as possible. Gripping options have also been ergonomically improved, thus making it even easier to operate.



*LED deck area illumination*



*LED lighting for safe working at night as standard*

# The pivot mounting.

Greater inclination for stable leveling.



The right solution in the event of an emergency.

Performance or compact pivot mounting - Rosenbauer custom solutions adapt to any need.

### Customized solutions for every mission

Rosenbauer offers the pivot mounting in two different versions. The Performance pivot mounting delivers the greatest possible throw range, while the Compact turntable offers outstanding maneuverability even in very narrow city streets. Our development team set their sights high with the goal of developing a vehicle that needs only a bit more space than the truck itself.

### Automatic leveling system

Rosenbauer turntable ladders have automatic terrain leveling capabilities. So the ladder set stays in the horizontal position up to an inclination angle of  $10^\circ$  in the longitudinal or transverse direction. The terrain compensation turns on automatically with the start-up of the turntable ladder.



*Performance pivot mounting*



### Expanded leveling system

In extreme situations, automatic leveling may not be enough. Integrated outriggers expand leveling capabilities up to an inclination angle of  $14^\circ$ . This means Rosenbauer turntable ladders are prepared for even the most extreme conditions. Uneven terrain can be compensated safely and reliably.

*Compact pivot mounting*

# The variable support.

## Unwavering stability equals safety

### Stabilizing vertical-horizontal outriggers.

Every Rosenbauer aerial ladder is equipped with a hydraulic vertical-horizontal jacking system. All support movements in the horizontal and vertical directions are continuously controllable within the maximum support range.





*Driving over obstacles is easily made possible by the variable support.*



*The support width is infinitely adjustable and always permits the maximum reach.*

### Extreme operational variability

The variable jacking system allows the aerial ladder to be extended to such a height that it is able to swivel over obstacles with the overhang of the turret. A tilting of the vehicle on the support also allows an inclination angle of the ladder set of up to -22 degrees, thus creating conditions suited to operations below ground level.

*Deliberate inclination of the vehicle to increase the below-ground-level area*

## ■ The variable support

### Narrow deployment situations

The support in contour allows use of the full ladder length and a 360° turn even in narrow application areas and with a loaded cage.

### Jacking system adaptable to the terrain

Obstacles can be crossed without difficulty with the aid of the jacking system. Even on uneven terrain, Rosenbauer turntable ladders are able to achieve optimum stability. Each column independently adapts to the terrain or road conditions.



# Trademark Internationality.

In operation around the globe.



**Raptor**

USA



**L39**

BRA

## Cross your own boundaries.

Whether freezing cold or sweltering heat, -40°C or +50°C, a Canadian winter or a Saudi Arabian desert: Rosenbauer aerial ladders are built for every possible extreme situation. Fire brigades protect and rescue goods and human lives with Rosenbauer aerial ladders on all of the world's continents.



**L32A**

GB



**L32A-XS**

SWE



**L32**

CHN



**L39**

RSA



**L20-FA**

AUS



Quality that protects lives.

Rosenbauer turntable ladders are high-tech products of the highest technical level.





# Production in the best hands.

## Technology leadership generates trust.

### A standard that you can count on.

Production takes place in a clocked continuous assembly and convinces qualitatively as well as through the final product. Only professionals trained by Rosenbauer are involved in the workplace. Each component undergoes comprehensive quality control through automated testing and integrated quality checks. And what applies to individual parts also applies to the vehicle itself.

Many members of the production team are experienced firefighters. Accordingly, a wealth of expertise and experience flows into the development and implementation. From the beginning to the end of each project, there are both a comprehensive consultation and ongoing correspondence with the customer. The high quality of advice and close relationship with the customer guarantee that all individual requirements in the design of the aerial rescue vehicles are fully implemented.



*Modern production of the ladder set by means of a robot welding system.*



*Production takes place within a clocked continuous assembly.*

# Service & Support

## Our performance promise for your safety

### Committed to customer orientation

Inspection and maintenance services ensure uniformly high quality of all Rosenbauer products. The focus is on flawless functionality, a long service life, and the safety of vehicles and equipment. This is achieved with a solid foundation of customized services that consistently focus on the customer's needs.

### Full service, around the clock.

In operations, only 100 % will suffice. Every piece of technology and equipment must work flawlessly. Every tool ready for action. And when something does fail, firefighters want it back in operation as quickly as possible. One call to Rosenbauer is all it takes for a technician to arrive within 24 hours from the nearest Rosenbauer Service Station.



### High-quality service

Every fire department has unique requirements. To address this effectively, Rosenbauer structures its services to be modular. Services are optimally adapted to the needs of each fire department. As a result, your vehicle fleet and equipment are maintained and supported on-time and in the most optimal way possible.

### Reliable partner.

You can expect fairness and customer-orientation throughout your dealings with Rosenbauer. Rosenbauer guarantees the availability of original spare parts for many years to come. This provides a solid foundation for high operational safety of all vehicles and equipment.

### Highly qualified, practical, personal.

Technicians from Rosenbauer Service & Support are highly qualified experts who are ready to handle inspections, maintenance, repairs, and product training whenever you need them. Many of them are active firefighters themselves and, therefore, know exactly what is needed. This experience and years of collaboration with customers result in personalized communications and a solid foundation of knowledge about your vehicles and equipment.



■ Service Center ■ Service Partner ○ More than 50 service partners

Rosenbauer ensures that you can depend 100% on your vehicle and equipment during operations. To this end, Rosenbauer provides maintenance, after sales service, and refurbishments through a service network comprising its own branches and international service partners in over 100 countries worldwide.



